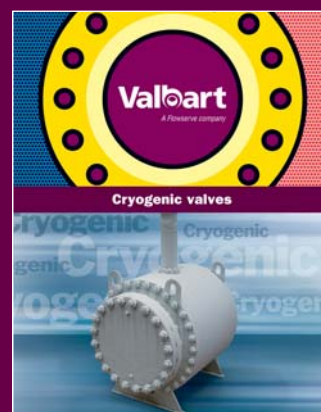
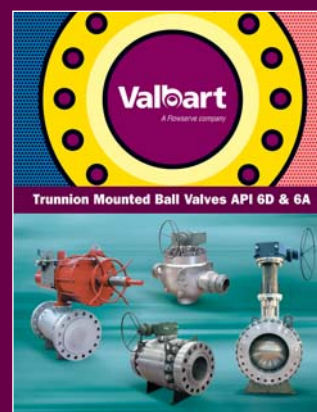
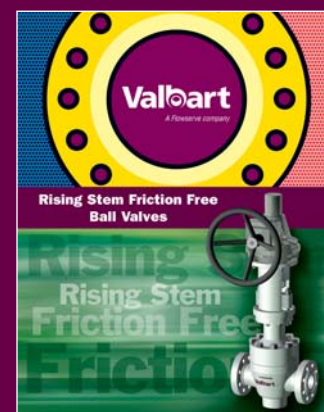
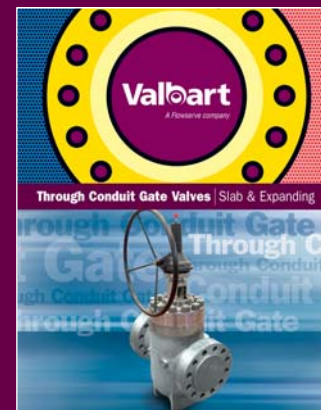
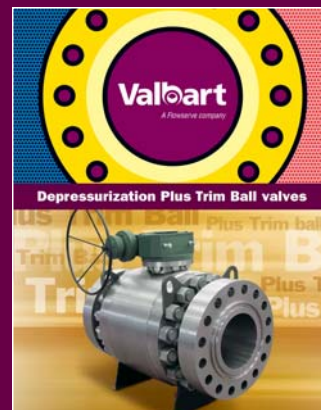
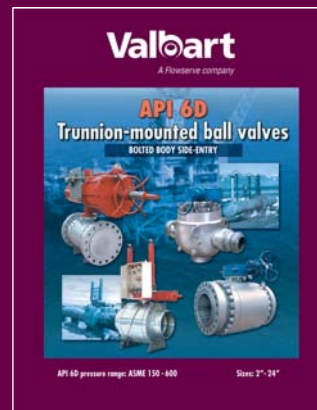


For Information on Valbart Specialized valves, please refer to the following leaflets:



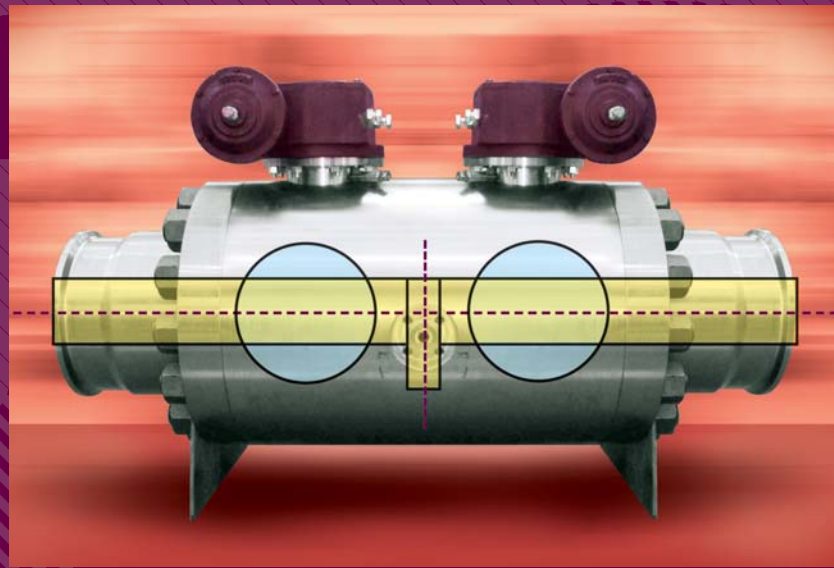
## Double block and bleed valves



**Valbart**  
A Flowserve company

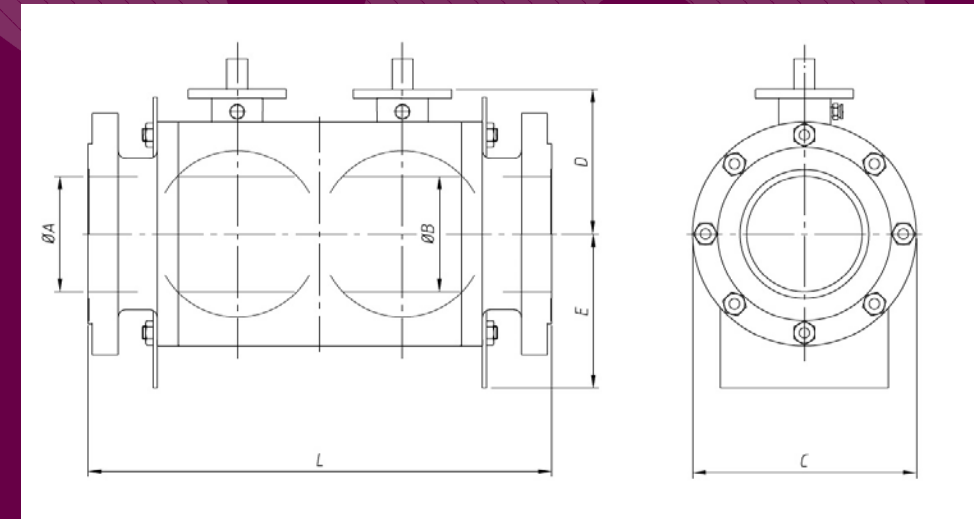
Via delle Industrie, 9/5 - 20883 Mezzago (MB) ITALY  
valbartsales@flowserve.com  
Phone: +39 039 624111 - Fax: +39 039 6241178  
www.valbart.com

# Double block and bleed valves



Available in the following size	
2" - 48"	150# - 600#
2" - 36"	900# - 1500#
2" - 24"	2500#
* Larger size available upon request	

# Double block and bleed valves



\* Length C does not include the length of the bleed plug

The “Double Block and Bleed Isolation Philosophy” requires two in-line isolation valves and a bleed valve, used to drain or vent trapped fluid between the two closure elements in order to safely isolate safely the downstream pipe. This feature can be achieved with one single valves c/w a bleed port between the obturators.

## MAIN APPLICATIONS

- Offshore oil & gas production
- Gas & oil terminals
- Chemical & Petrochemical
- Refining
- Fiscal Metering Skid Manufacturing
- LNG gas carrier
- Process/ Power industry contractors

## ADVANTAGES

- Space and weight saving
- Cost saving (product & installation)
- Minimized leak paths
- Increased line structural integrity
- ESDV+MOV or ESDV+XV configurations
- Increases reliability of the system

## CHARACTERISTICS

- Anti blow out/low emission stems
- Fire safe & anti-static design
- Independent ball and stem
- Self aligning trims
- Self relieving/ Double piston effect floating seats
- Soft or metal seated

Design is available in side entry, (bolted, welded body) and for onshore, offshore (top side) or sub-sea configurations. Bleed/Vent system can be provided with Globe, Gate or Ball valves as per customers requirement.

SIZE (in)	CLASS # 600							CLASS # 900							CLASS # 1500						
	A	B	C	D	E	L	W (Kg)	A	B	C	D	E	L	W (Kg)	A	B	C	D	E	L	W (Kg)
2	49	49	165	102	98	528	47	49	49	216	104	103	584	82	49	49	216	106	104	584	95
3x2	74	49	210	102	98	587	47	74	49	241	103	102	574	88	74	49	267	104	103	660	129
3	74	74	210	165	128	627	93	74	74	241	163	132	643	94	74	74	267	167	128	660	184
4x3	100	74	373	165	128	703	117	100	74	292	166	127	719	152	100	74	311	166	128	787	207
4	100	100	273	210	160	679	170	100	100	292	211	169	734	232	100	100	311	179	170	787	356
6x4	150	100	356	210	160	806	225	150	100	381	208	163	857	328	144	100	394	213	168	944	485
6	150	150	356	250	200	873	380	150	150	381	259	213	924	576	144	144	394	260	233	1010	816
8x6	201	150	419	250	200	975	438	201	150	470	263	213	1051	660	192	144	483	265	229	1140	906
8	201	201	419	288	255	1020	728	201	201	470	297	264	1096	928	192	192	483	304	290	1194	1312
10x8	252	201	510	288	255	1147	880	252	201	545	294	269	1197	1035	239	192	585	297	287	1353	1431
10	252	252	510	330	308	1264	1137	252	252	545	342	333	1314	1515	239	239	585	363	352	1435	2250
12x10	303	252	560	330	308	1314	1379	303	252	610	348	328	1441	1733	287	239	709	360	347	1581	2288
12	303	303	575	378	348	1380	1601	303	303	610	384	379	1507	2114	287	287	709	417	425	1664	3150
14	334	334	628	394	360	1494	1516	334	334	640	398	368	1640	2175	315	315	765	437	426	1854	3990
16x12	385	334	686	378	348	1533	1887	385	334	705	400	382	1679	2422	360	315	848	424	422	1925	3640
16	385	385	700	430	410	1644	2135	385	385	710	436	437	1790	3225	360	360	848	475	493	2042	5698
18	436	436	774	467	430	1790	2933	436	436	800	484	497	2017	4230	405	405	980	563	608	2184	8673
20x16	487	436	815	430	410	1850	3128	487	436	790	439	442	1850	3738	455	405	1015	484	502	2161	6676
20	487	487	865	500	492	1985	3693	487	487	890	532	503	2109	6300	455	455	1015	617	645	2450	11798
24x20	589	487	940	500	492	2192	4547	589	487	1040	534	500	2240	7020	530	455	1293	624	643	2575	14138
24	589	589	1028	594	570	2207	6630	589	589	1059	617	633	2368	8840	530	530	1293	698	724	2720	18564

- All dimensions except where other wise specified are in mm.
- Weight figures are relevant to flanged end valves.
- Note: For dimensions and weights in larger sizes consult the factory.

- Dimensions C, D, E, and weights are subject to change without notice.
- Face-to-face dimensions not listed in industry standards are subject to change without notice.