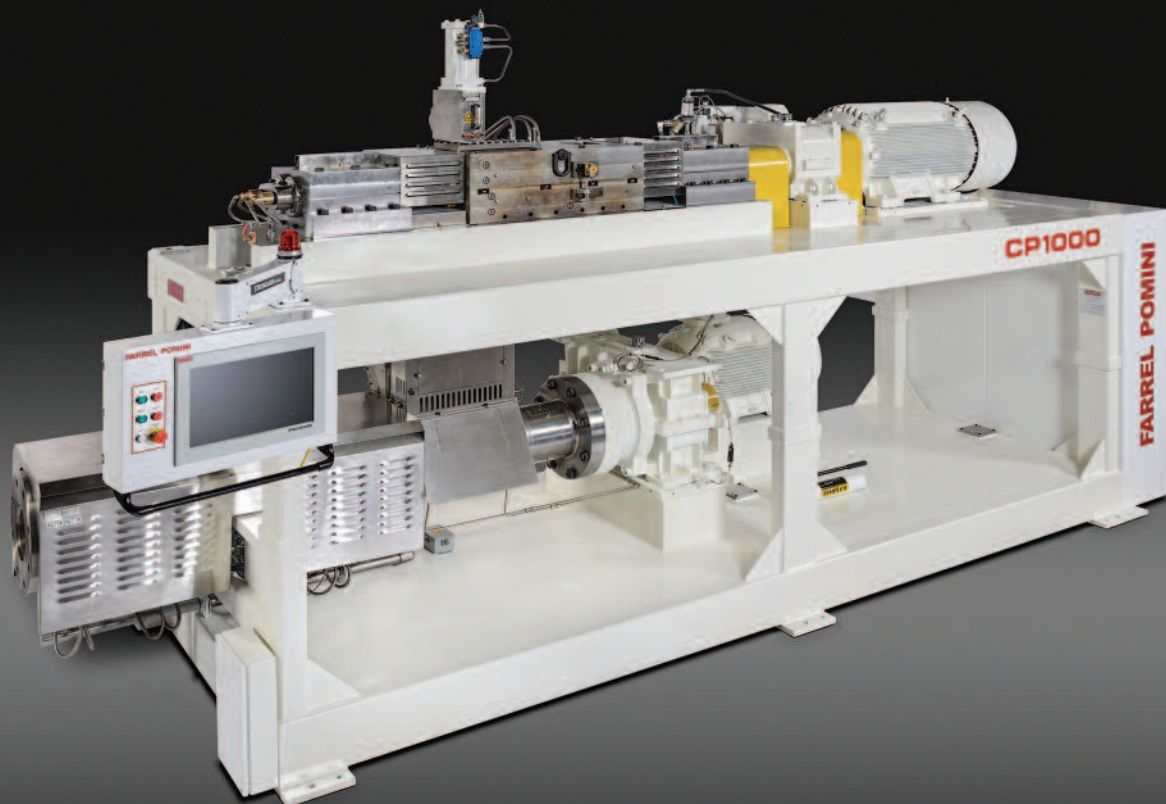




**FARREL POMINI**  
*continuous compounding systems*



**CP SERIES II™  
COMPACT PROCESSOR**



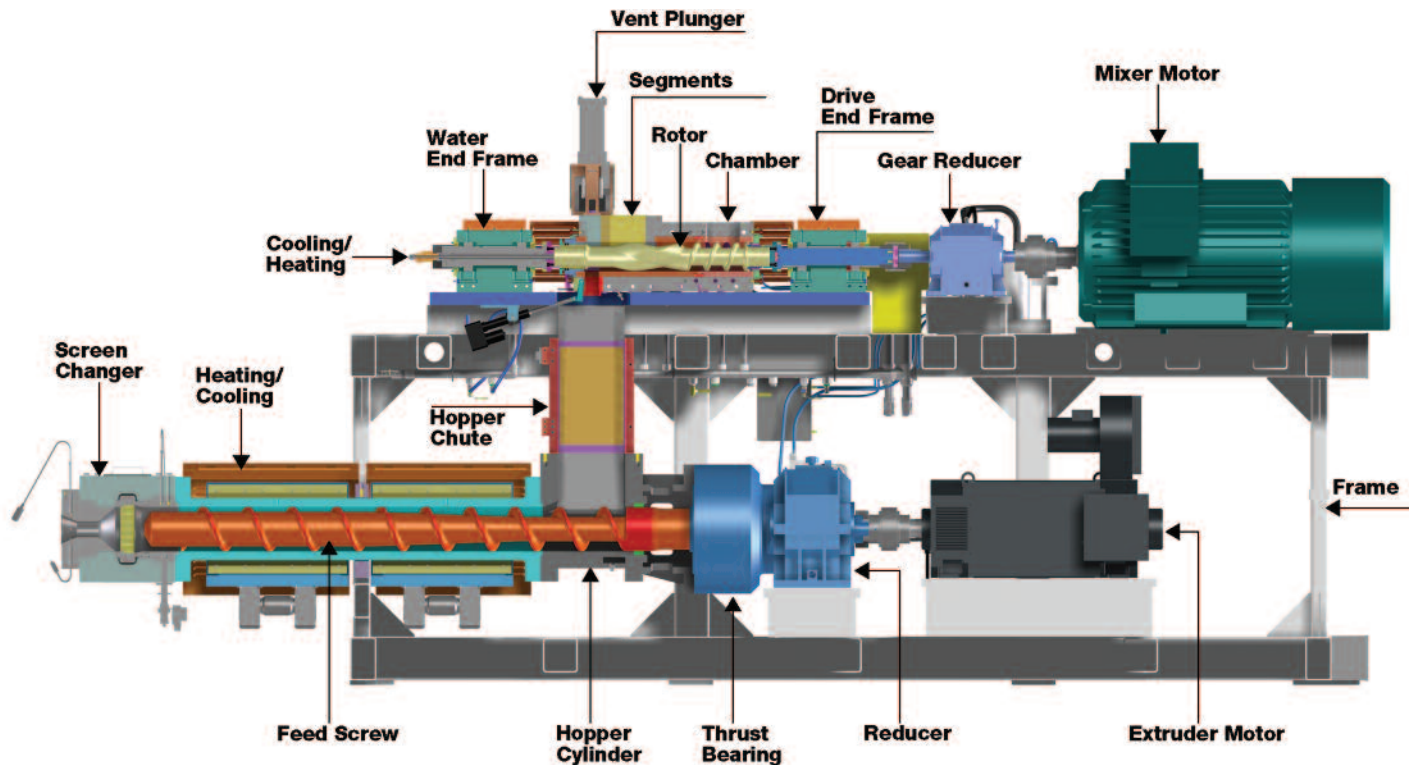
The CP Series II™ Compact Processor provides a unique technology to the polymer conversion industry. This highly productive compounder is designed specifically for top quality dispersion of highly filled, highly pigmented materials. It contains an independently controlled continuous mixer and an extruder system.

The Compact Processor is able to process highly abrasive materials outperforming other processors. It is designed to incorporate various types of feeding systems and pellet formation components for versatility making its applications virtually unlimited.

It is available in standard and extra long (XL) configurations to meet a diverse range of processing requirements.

### **Key Features Include:**

- Two counter rotating, non-intermeshing rotors; available in various pairings and geometries
- The mixing chamber barrel incorporates numerous features which enhance the CP's processing performance, operation and maintenance
- A hot feed pumping extruder with minimal residence time
- Individual drive motors for the mixer and the extruder mean the mixing function can be optimized independent of the pumping function
- The control system can be set in automatic or adjusted manually during operation



### CP Series II™ & CP Series II™ XL Capacity Data\*

CP Compounder Size	125	250	550 & 550XL	1000 & 1000XL	2000 & 2000XL	2500 & 2500XL	4000 & 4000XL	
Materials/Process	Production rates in kg/hr.							
HDPE, LDPE, LLDPE; coloring, compounding	80-120	170-240	350-500	750-1200	1500-2200	1875-2750	2500-3800	
PE; masterbatch, filling	20%	60-110	130-225	350-520	750-1100	1500-2200	1875-2750	2500-3800
	30 – 40%	60-120	130-240	350-570	750-1200	1500-2400	1875-3000	2500-4000
	>50%	100-150	215-300	500-800	1000-1500	1800-2500	2250-3125	3000-4300
PP; coloring, compounding	40-120	85-250	350-520	750-900	1500-1900	1875-2375	2500-3200	
PP; masterbatch, filling	20%	50-120	100-250	350-570	700-1000	1500-2200	1875-2750	2500-3800
	40%	10-110	100-230	350-570	700-1000	1500-2400	1875-3000	2500-4000
	>40%	80-150	170-300	500-800	1000-1500	1700-2500	2125-3125	2400-4300
PS; SAN; masterbatch	20%	80-150	215-300	400-630	750-1100	1500-2200	1875-2750	2500-3800
	30-40%	80-150	215-300	400-690	750-1300	1500-2250	1875-2810	2500-2900
	>50%	80-150	200-340	400-690	900-1500	1800-2700	2250-3375	3000-4400
ABS; compounding	80-150	215-300	400-610	750-1100	1500-2200	1875-2750	2500-3800	
PVC	80-150	180-340	300-650	600-1200	1800-2500	2250-3125	3000-4300	
TPE, TPO	40-125	85-250	350-520	750-1100	1500-2200	1875-2750	2500-3800	
PET, PBT, PC; filling, compounding	30-100	50-200	250-400	500-900	1000-1600	1250-2000	1750-2800	
PA; filling, compounding	30-75	50-150	250-400	500-900	1000-1600	1250-2000	1750-2800	

\* All production rates should be factory verified.

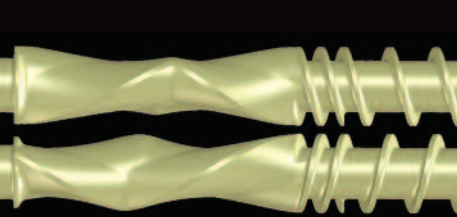
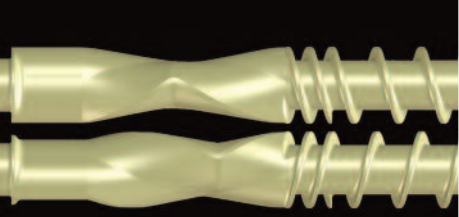
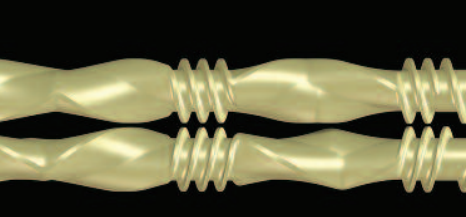
## CP Series II™ & CP Series II™ XL Standard Specifications

CP Compounder Size	125	250	550 & 550XL	1000 & 1000XL	2000 & 2000XL	2500 & 2500XL	4000 & 4000XL
<b>Mixer</b>							
Power kW (hp)	22.5 (30)	45 (60)	93 (125)	185 (250)	325 (500)	450 (600)	600 (800)
Max. rotor speed RPM	1150	850	650	650	650	650	650
Rotor diameter mm (in.)	48 (2)	73 (3)	102 (4)	135 (5)	168 (7)	168 (7)	203 (8)
<b>Hot Feed Extruder</b>							
Power kW (hp)	15 (20)	23 (30)	56 (75)	75 (100)	150 (200)	225 (300)	300 (400)
Max. screw speed RPM	100	100	100	100	100	100	100
Screw diameter mm (in.)	80 (3.25)	102 (4)	127 (5)	178 (7)	216 (8.5)	254 (10)	254 (10)
Screw length L/D	11/1	11/1	11/1	11/1	11/1	11/1	11/1

## CP Series II™ & CP Series II™ XL Weights and Dimensions

CP Series II™ Compounder Size		125	250	550	1000	2000	2500	4000
Overall weight	kg	3,725	4,540	7,485	13,620	20,430	22,725	26,000
Length	mm	2,960	4,320	4,830	6,045	7,205	7,305	8,130
Width	mm	1,015	1,345	1,650	1,980	2,400	2,435	2,435
Height	mm	2,030	2,110	2,730	3,005	3,385	3,385	3,420
Floor to extruder C/L	mm	760	875	915	915	915	915	915
CP Series II™ XL Compounder Size				550XL	1000XL	2000XL	2500XL	4000XL
Overall weight	kg			7,740	14,020	21,305	23,600	26,900
Length	mm			5,275	6,555	7,875	7,975	8,840
Width	mm			1,650	1,980	2,400	2,435	2,435
Height	mm			2,730	3,005	3,385	3,385	3,420
Floor to extruder C/L	mm			915	915	915	915	915

## Standard Rotors

		
<b>Number 7</b>	<b>Number 15</b>	<b>CPXL</b>
<ul style="list-style-type: none"> <li>For temperature sensitive materials</li> </ul>	<ul style="list-style-type: none"> <li>All purpose mixing and compounding for every mixer size</li> <li>Standard for concentrates and higher filler loadings</li> </ul>	<ul style="list-style-type: none"> <li>High filler</li> <li>For temperature sensitive materials</li> <li>Reduced energy input</li> </ul>

## Standard Options

### Lined Chamber Barrel:

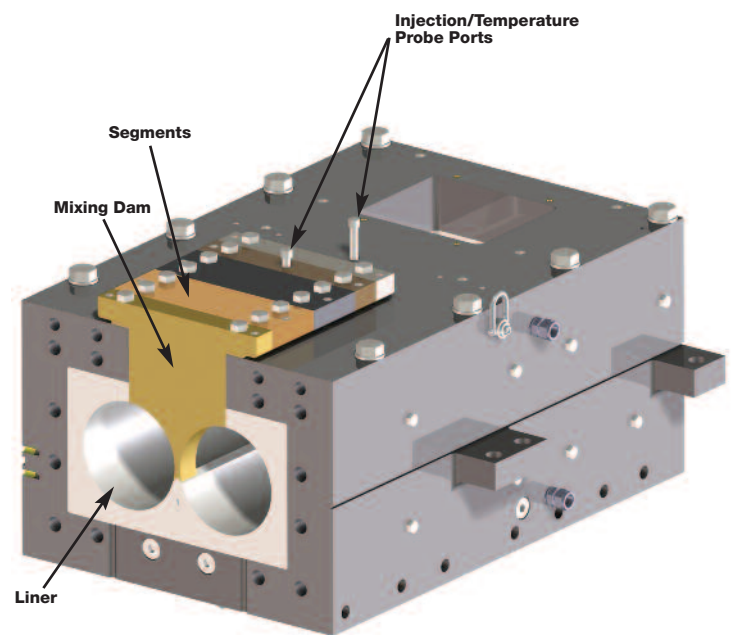
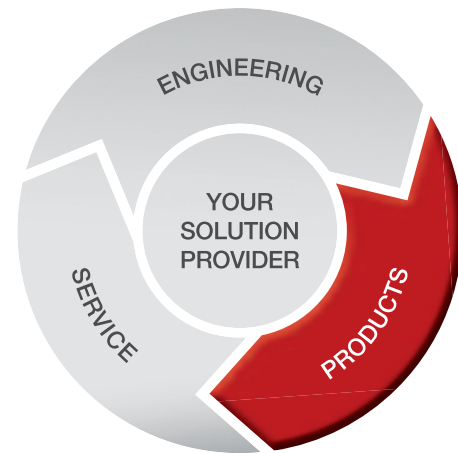
- Easily replaceable liners
- Various bore diameters
- Specifically designed for highly abrasive applications
- Available liner construction materials include tool steel, chrome plated steel, ceramic, stainless steel and Tungsten carbide clad steel

### Segmented Chamber Barrel and Inserts:

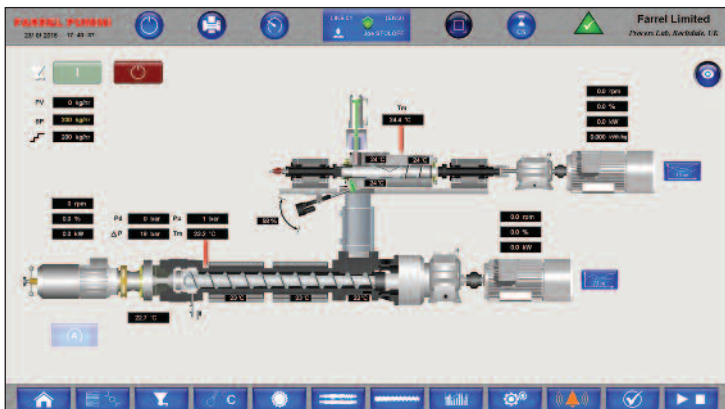
- Provide increased venting area
- Allows downstream addition of solid additives
- Permits infinite selection for oil injection and/or temperature measurement locations
- Increases dispersion capability
- Provides more uniform discharge temperature

### Vent Plunger:

- Keeps the vent free from polymer build-up
- Automatic PLC controlled operation



## Synergy Control System Features



- Control of feed system from operator touch screen
- Integrated control of support equipment upstream & downstream
- Automatic start-up of downstream process
- Automatic shutdown under normal and fault conditions
- Remote monitoring and support capability
- PLC-based with touchscreen HMI
- Expandable to supervisory system (SCADA)

[www.farrel-pomini.com](http://www.farrel-pomini.com)

